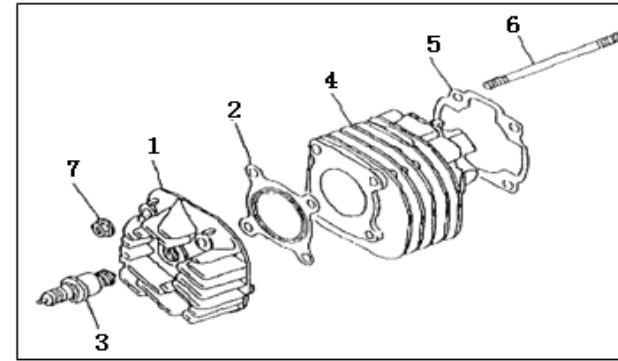


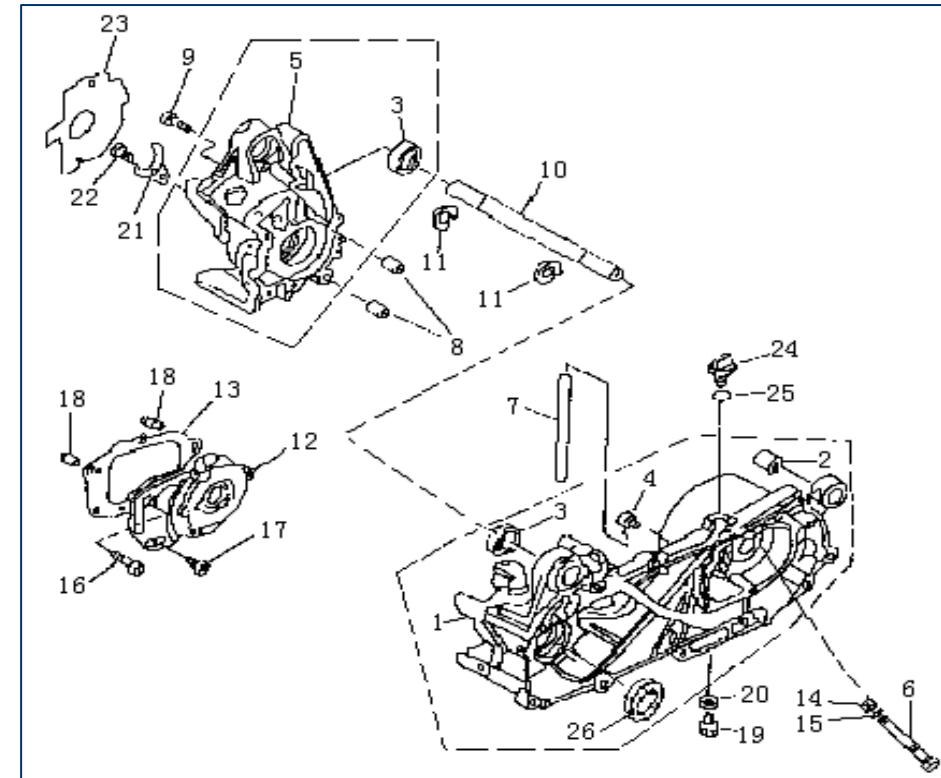
QJ1E40QMB(老)JCK(Q07-01)-QJ50QT-5-1C(1010201.00401)

1	气缸总成 (40-1) C YLINDER HEAD ASSY状态：仿欧II气缸盖，火花塞型号：BR8HSA，缸盖螺母：正常型,非石棉垫片				
NO	PARTS NO.	QJ CODE	DESCRIPTION	QTY	RMK
1	1E40-1-1A	30701B01F00A	HEAD , CYLINDER	1	
2	40-1-2	30507B01F000	GASKET , CYLINDER HEAD	1	
3	52-1.2	201204.013000	SPARK PLUG	1	BR8HSA
4	1E40-1-3A	27101B01F00A	CYLINDER	1	
5	40-1-4	204204.001000	GASKET , CYLINDER	1	非石棉
6	40-2-10	26107B01F910	STUD BOLT	4	
7	50-2-9	304290700062	NUT	4	



2	曲轴箱分总成 (40-2 £ 40-7) B CRANKCASE ASSY			
NO	PARTS NO.	CODE	DESCRIPTION	QTY
1	40-2-12	26100B01F000	CRANKCASE , LH	1
2	50-2.1	26108G02F000	BUSH,ENGINE MOUNTING	1
3	GB/T276-1994	B12046600300	bearing	2
4	50-2-7	26126G02F000	BREATHER PLUG	1
5	40-7-1	26200B01F000	CRANKCASE , RH	1
6	50-16-2	26142G02F000	BRAKE SHOE ANCHOR PIN ASSY	1
7	50-2-6	26105G02F000	HOSE	1
8	50-2-15	26123G02F000	DOWEL PIN	2
9	GB/T823-1988	302270603562	SCREW	6
10	40-7-5	26109B01F000	AXLE,engine mount	1
11	GB/T894.1-1986	B08010001700	CIRCLIP	2
12	50-5.1.1-1	18101G02F001	COVER, GEAR BOX	1
13	50-0-2	214201.001000	GASKET , GEAR BOX	1
14	GB/T6177-2000	B04070812553	NUT	1
15	50-16-1	26143G02F000	O RING	1
16	GB/T16674-1986	B01070603063	SCREW	2
17	GB/T16674-1986	B01070602263	SCREW	3
18	157.4-6	26208J01F000	DOWEL PIN	2
19	50-2-2	301310801605	FLANGE BOLT	1
20	153FM-0900003	18105H03F000	WASHER	1
21	50-7-4	26214G02F000	HOLDER	1
22	GB/T16674-1986	301310601262	SCREW M6X12	1
23	50-7-3	206321.001000	GASKET	1
24	50-2-3	206407.004083	OIL PLUG	1
25	50-2-4	26102G02F000	O-RING	1
26	50-2-13	26112G02F000	SHAFT COLLAR	1

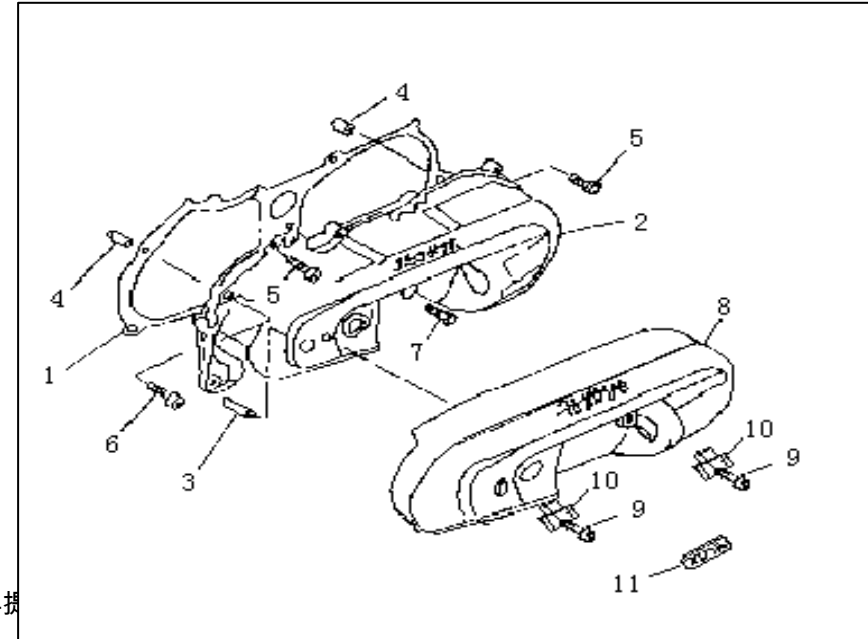
RMK



非石棉

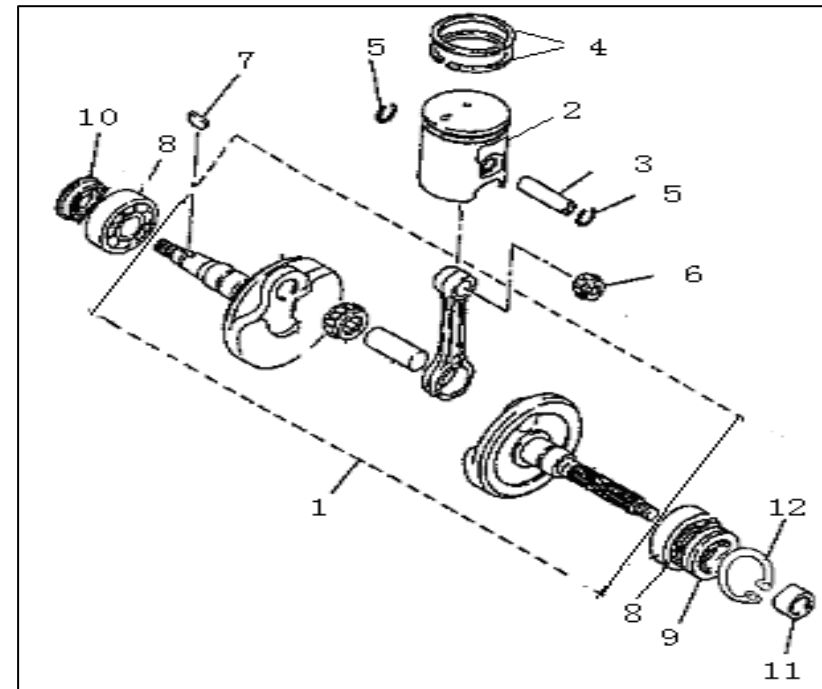
非石棉

序号	图号	代码	DESCRIPTION	数量	备注
NO	PARTS NO.	CODE	DESCRIPTION	QTY	RMK
3 侧盖分总成 (50-3-1J) SIDECOVER ASSY非石棉垫片, 标贴VENICE, 带塑料罩盖					
1	50-0-1	207208.009000	GASKET , SIDE COVER	1	非石棉
2	50-3-1	207200.048000	SIDE COVER	1	光板
3	50-2-8	26128G02F000	SHAFT	1	
4	157.4-6	26208J01F000	DOWEL PIN	2	
5	GB/T16674-86	302270602565	SCREW M6X25	8	镀铬
6	GB/T16674-86	302270603565	SCREW	2	镀铬
7	GB/T16674-86	302270606565	PAN HEAD SCREW	1	镀铬
8	50-3.0.4	14300G02F000	PROTECTING COVER	1	
9	50-3-4	14112G02F000	SCREW	2	
10	50-3-5	14113G02F000	NUT BUSH,rubber	2	
11			LABEL	1	venice (整车提



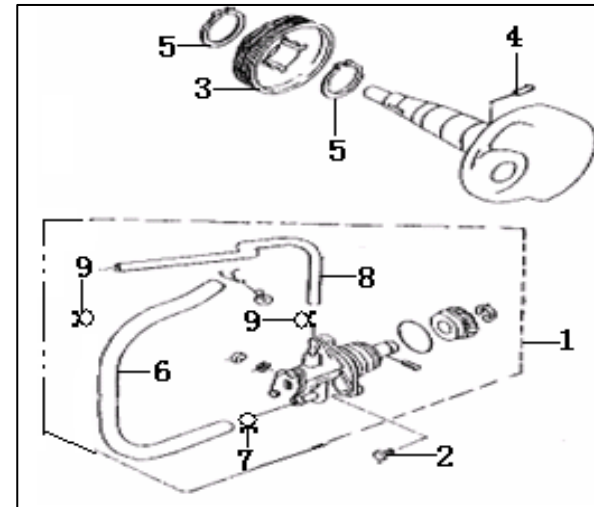
4 活塞连杆曲轴分总成 (QJ1E40MB.8B) PISTON CRANKSHAFT CONNECTING ROD ASSY 欧I销孔加大(轴承TPI)

序号	图号	代码		数量	备注
NO	PARTS NO.	QJ CODE	DESCRIPTION	QTY	RMK
1	QJ1E40MB.8.1	208100.022000	CRANKSHAFT , ASSY	1	
2	40-4.2B	15100B01F00B	PISTON ASSY	1	欧I
3	QJ1E40MB.8-2	15105B16F000	PISTON PIN	1	12MM
4	40-4-5	15103B01F000	PISTON RING ASSY	2	AVL
5	50-4-4	15111G02F000	CIRCLIP	2	
6	QJ1E40MB.8.2	15110B16F000	NEEDLE BEARING	1	TPI
7	GB/T1099-1979	15101B01F000	WOODRUFF KEY	1	
8	GB/T276-1994	B12016620453	BALL BEARING	2	TPI
9	50-2-14	15213G02F000	OIL SEAL	1	
10	50-7-2	26215G02F000	OIL SEAL ASSY	1	
11	50-4-2	15214G02F000	COLLAR	1	
12	50-2-16	17308G02F000	CIRCLIP	1	

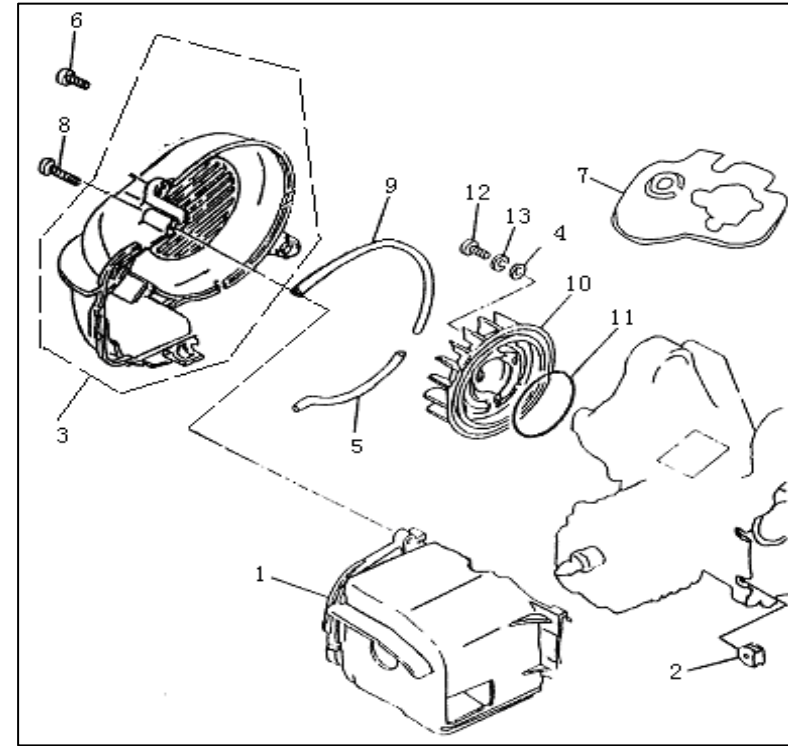


5 机油泵分总成 (QJ1E40QMB-4.10B) OIL PUMP ASSY状态 : 带拉线50CC (打502标记) 进油管长度 : 760±5 , 出油管长度 : 280±5

序号	图号	代码		数量	备注
NO	PARTS NO.	QJ CODE	DESCRIPTION	QTY	RMK
1	QJ1E40QMB-4.10	219101.012000	OIL PUMP ASSY	1	打502标记
2	GB/T823-2000	B02000501463	SCREW	2	
3	50-4-6	15211G02F000	PUMP DRIVE GEAR	1	
4	GB/T119-2000	B090103014C0	PIN	1	
5	50-4-7	15106G02F910	CIRCLIP	2	
6	QJ1E40QMB-4.10	221405.102000	HOSE,OIL INLET	1	
7	50-0.0.2-2A	19213G02F00A	HOSE CLIP	2	镀铬
8	QJ1E40QMB-4.10	221405.101000	HOSE,OIL OUTLET	1	
9	50-0.0.3-2A	19217G02F00A	HOSE CLIP	2	镀铬

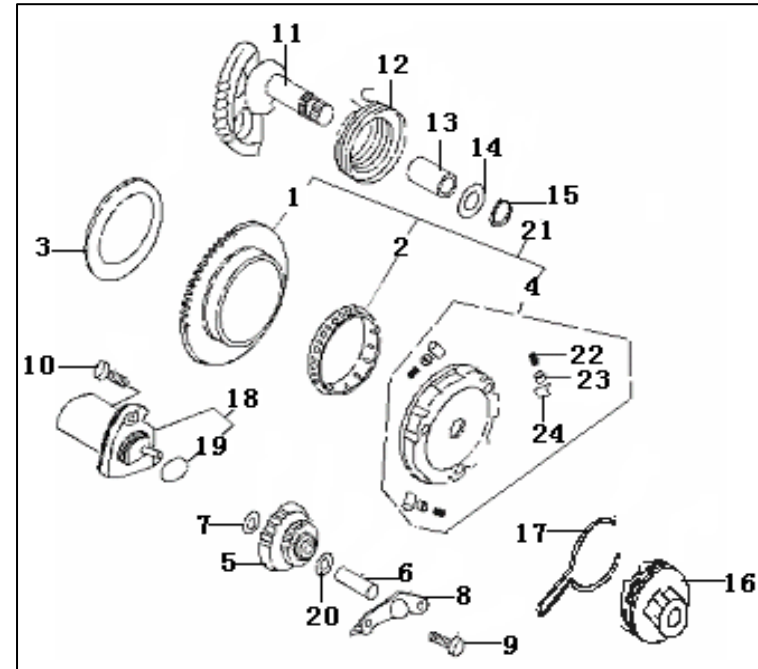


6	导风罩分总成 (40-8B) AIR COOLING SYSTEM 外露件镀铬				
序号	图号	代码		数量	备注
NO	PARTS NO.	QJ CODE	DESCRIPTION	QTY	RMK
1	40-8-1	20301B01F000	COWLING,cylinder	1	
2	50-2-11	20303G02F000	GROMMET	2	
3	QJ1E40QMB	20200B01F000	COVER ASSY (FAN)	1	
4	GB/T97.1-2002	B07030000600	WASHER φ6	3	
5	50-8-5 (短)	20208G02F000	BEADING (RUBBER)	1	110
6	GB/T823-1988	302270602065	BOLT M6X20	2	镀铬
7	50-0-4	20102G02F000	DUST COVER (RUBBER)	1	
8	GB/T5282-1985	3050355040F5	SCREW ST5.5X40-F	1	镀铬
9	50-8-5 (长)	20206G02F000	BEADING (RUBBER)	1	220
10	40-0.0.1-1	20401B01F000	FAN ASSY	1	
11	50-0.0.1-2	20402G02F000	RUBBER RING 70X3.1	1	
12	GB/T5787	301310601665	SCREW M6X16	3	
13	GB/T93-1987	B07000000600	SPRING WASHER φ6	3	



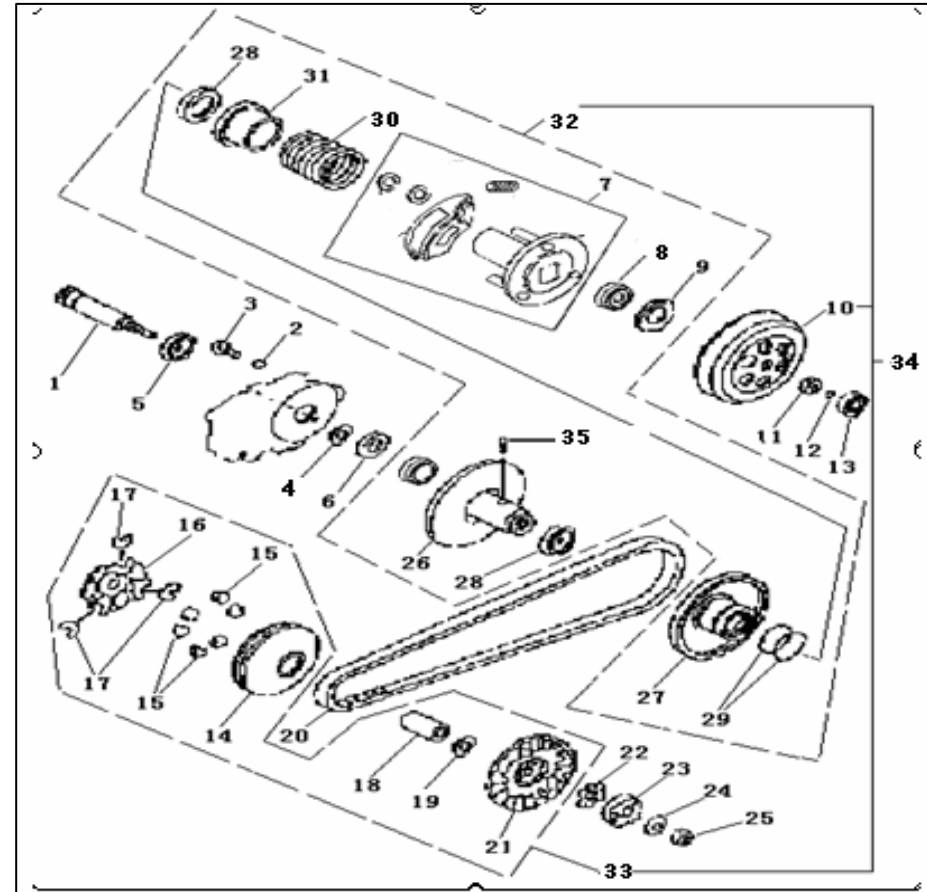
7 启动分总成 (50-11B £ 50-15B £ 50-3-2B) KICK STARTER ASSY马达线长度 : 340~350MM,启动轴正常

NO	PARTS NO.	QJ CODE	DESCRIPTION	QTY	RMK
1	50-15.0.2	34120G02F000	START GEAR ASSY	1	
2	50-15.0.1	34121G02F000	NEEDLE BEARING	1	
3	50-15-4	34123G02F000	THRUST WASHER	1	
4	50-15.1.1A	34110G02F00A	STARTER CLUTCH ASSY.COMP	1	
5	50-15-1/50-15.2	34126G02F000	DRIVEN GEAR,STARTER	1	
6	50-2-8	26128G02F000	IDLE GEAR SHAFT	1	
7	50-15-3	34122G02F000	PLATE WASHER	1	
8	50-15-2	34125G02F000	IDLE GEAR HOLDER	1	
9	GB/T5787-2000	301310601062	SCREW	2	
10	GB/T70-2000	302040602062	SCREW	2	
11	50-3.0.3	216100.004000	SHAFT, kick starter	1	
12	50-3-3	17407G02F000	SPRING	1	
13	50-3-10	216217.001000	BUSH	1	
14	50-3-11	307991005552	WASHER ,kick starter	1	
15	GB/T894.1-1986	308090150000	CIRCLIP	1	
16	50-3.0.1	17415G02F000	KICK PINION ASSY	1	
17	50-3-2	17418G02F930	CLIP	1	
18	50-11	218100.018472	STARTING MOTOR ASSY	1	镀铬
19	GB/T3452.2-1987	B190102120B0	O-RING	1	
20	50-15-5	34130G02F000	PLATE WASHER	1	
21	50-15.1A	217100.100000	START CLUTCH ASSY	1	
22	50-15.1-4(A)	34404G02F00A	SPRING	3	
23	50-15.1-3(A)	34405G02F00A	CAP	3	
24	50-15.1-2(A)	34402G02F00A	ROLLER	3	



8 传动机构总成 (40-5-1 C) CLUTCH ASSY离合器滚珠重量5克, 结构为左半 (正常型50-5-8) +右半 (正常型50-5.0.1) , 不带限速套环

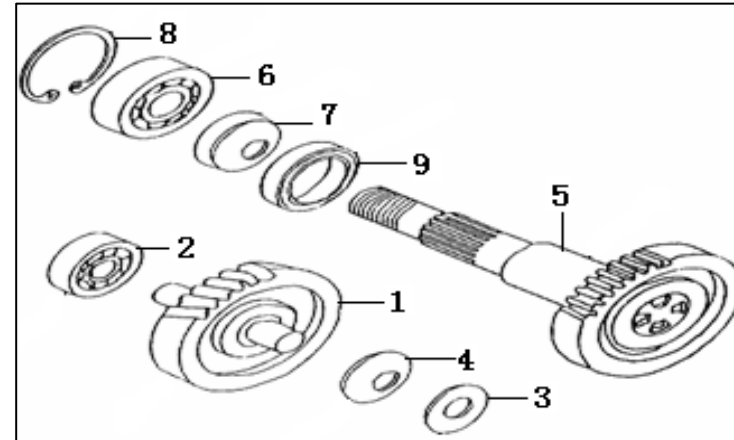
序号	图号	代码	数量	备注
NO	PARTS NO.	QJ CODE	QTY	RMK
1	40-5.1.1-3	24201B01F000	1	
2	50-5.1.1-4	18114G02F000	1	
3	GB/T16674-1986	B01090801263	1	镀彩锌
4	GB/T894.1-1986	B08010001700	1	
5	GB/T276-1994	B12016600300	1	
6	50-5.1.1-2	24203G02F000	1	
7	40-5.1.2	24301B01F000	1	
8	50-5.1.2-5	24245G02F000	1	
9	50-5.1-2	24303G02F000	1	
10	50-5.1.4	24700G02F000	1	
11	50-5.1-3	24305G02F940	1	
12	50-5.1-4	24243G02F000	1	
13	50-3-6	24209G02F000	1	
14	50-5.0.1	24101G02F000	1	
15	QJ1E40QMB-4.2.	213119.003000	6	重5g
16	50-5-6	24103G02F000	1	
17	50-5-5	24104G02F000	3	
18	50-5-7	24105G02F000	1	
19	40-5-12	24106B01F000	1	
20	40-5-11	24107B01F000	1	
21	50-5-8	24108G02F000	1	
22	50-5-9	24109G02F000	1	
23	50-5-10	213203.001161	1	
24	50-4-1	15112G02F010	1	
25	GB/T6173-2000	B04031212553	1	



26	50-5.1.2.1	24204G02F000	FACE , FIXED DRIVEN	1
27	50-5.1.2.2	24205G02F000	FACE , MOVABLE DRIVEN	1
28	50-5.1.2-4	24206G02F000	OIL SEAL	2
29	50-5.1.2-3	24207G02F000	O-RING	2
30	40-5.1-1	24308B01F000	SPRING	1
31	50-5.1.2-1	24309G02F930	SEAT , SPRING	1
32	40-5.1	24200B01F000	DRIVEN PULLY COMP.	1
33	50-5	213100.039000	DRIVE PULLEY COMP.	1
34	40-5	213100.010000	SHIFT ASSY	1
35	50-5.1.2-2	24208G02F000	PIN , GUIDE	2

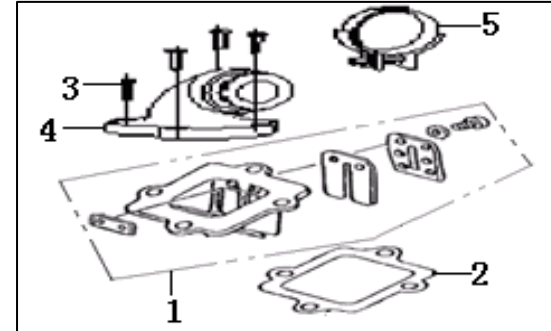
5克

9 变速系统分总成(40-5-2A)TRANSMISSION SYSTEM ASSY(40中间轴, 40输出轴)					
序号	图号	代码		数量	备注
NO	PARTS NO.	QJ CODE	DESCRIPTION	QTY	RMK
1	40-5.3	17800B01F000	SHAFT , IDLE	1	
2	GB/T276-1994	B12016620100	BEARING 6201	1	
3	50-5-3	17509G02F000	PLATE WASHER12	1	
4	50-5-4	17802G02F000	WASHER , CONICAL	1	
5	40-5.2	17300B01F000	DRIVEN SHAFT(GEAR BOX)	1	
6	GB/T276-1994	B12016600400	BEARING	1	
7	50-2-18	17317G02F000	OIL SEAL	1	
8	50-2-16	17308G02F000	CIRCLIP	1	
9	50-2-17	26136G02F000	NEEDLE BEARING	1	



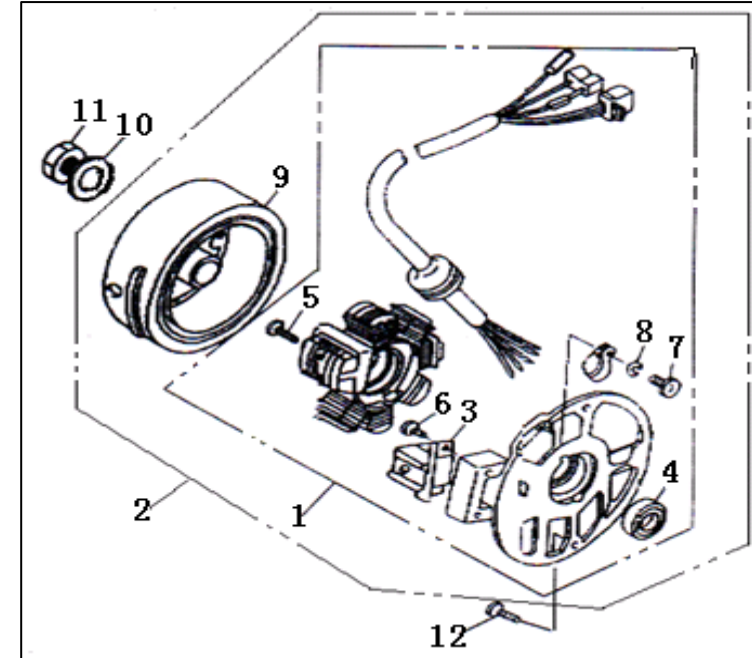
10 进气阀分总成 (50-13D) REED VALVE ASSY正常型，双开、正常，进气管正常型，不带断头螺钉

序号	图号	代码	数量	备注	
NO	PARTS NO.	QJ CODE	DESCRIPTION	QTY	RMK
1	50-13	32300G02F000	1	双开、正常	
2	50-13-3	202306.002000	1	非石棉	
3	GB/T70-2000	302040602065	4	镀铬	
4	50-13.1	32200G02F000	1		
5	50-13.2	202104.006000	1		



11 磁电机总成 (50-9A) MAGNETO ASSY 飞轮提前角：15°

序号	图号	代码	数量	备注	
NO	PARTS NO.	QJ CODE	DESCRIPTION	QTY	RMK
1	50-9.2	34310G02F000	1		
2	50-9	223100.100000	1	15°	
3	50-9.2.3	34330G02F000	1		
4	JB2600-80	34350G02F000	1		
5	GB/T818-2000	B02000502522	2		
6	GB/T818-2000	B02000501262	2		
7	GB/T818-2000	B02000400622	1		
8	GB/T93-1987	B07000000400	1		
9	50-9.1	223101.019000	1	15°	
10	GB/T97.1-2002	B07030001200	1		
11	153FM-0000044	15228H03F000	1		
12	GB/T5787	B01070601664	2		



12	化油器分总成 (PZ19JB-2B) CARBURETORASSY化油器分总成 (三国, 主量孔 70)				
序号	图号	代码		数量	备注
NO	PARTS NO	CODE		QTY	RMK
1	(PZ19JB-2) -01	32510B01F000	NEEDLE, jet	1	
2	PZ19JB-04-02	32511B01F000	VALVE,PISTON	1	
3	PZ19JB-01-01	224202.100000	JET, main	1	70
4	PZ19JB-05-13	32612B01F000	ENRICH VALVE	1	线长270
5	PZ19JB-05-02	32619B01F000	PIN, float	1	
6	PZ19JB-07-02	32620B01F000	FLOAT	1	
7	PZ19JB-03-01	32701B01F000	GASKET	1	
8	PZ19JB-01-06	32609B01F000	JET, idle	1	
9	(PZ19JB-2) -00	224100.043000	CARBURETOR ASSY	1	三国
10	(PZ19JB-2) -05 04	32508B01F000	CLIPMM,V shape	1	

