

DIFFERENTIAL INSTALLATION INSTRUCTIONS

1. With a 15mm socket remove both wheels.



2. With a 15 and 17mm wrench remove each shock.



3. With 14 and 17mm wrench and remove both bolts from each knuckle, and tie up each upper A-arm.



4. Remove each CV axle.



5. With a 10 and 12 mm wrench remove the skid plate.



6. With an 8 and 10mm wrench remove the 250 plate.



7. With a 10mm wrench remove the brake caliper.



8. With a pair of needle nose pliers remove the chain.



9. With a 13mm wrench remove the bolts that hold the axle bearings in place and remove the axle.



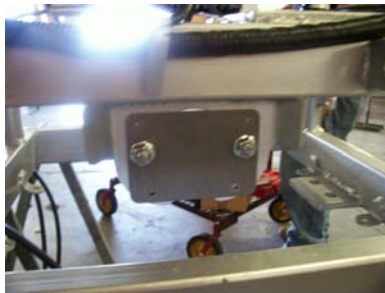
10. Loosen front and rear engine bolts.



11. With an 18mm wrench loosen the speedo pickup and lift it as high as possible.



12. Using the provided template, align the square holes of it with the square holes of the bearing hanger brackets. Be sure the wider set of the 2 holes is on top.



- a. Drill out the 4 holes with a 1/8" drill bit first.
- b. Drill out the holes with an 11/32" drill bit.

13. Pump the differential with grease until you see grease coming out of it.



14. Install the differential with 8 – 8mm x 16 bolts and 8 – 8mm lock washers.



15. With an 18 mm wrench set the speedo pick up approximately 1/8” above the magnet on the differential.

16. With an 8 and 10mm wrench loosen the 4 bolts holding the air box in place.

17. With a 10 and 12mm wrench loosen the 2 muffler bolts.

18. Push the engine as far forward as you can.

19. Reinstall the chain.

20. Pull the engine back to tighten the chain.

21. Tighten back the engine bolts, air box bolts and muffler bolts.

22. Reinstall the brake caliper.

a. Once in place check to see that the brake disc can be rotated by hand

b. If not you will need to use the flat washers in-between the brake caliper and brake caliper mount.

23. Reinstall the skid plate.

24. Reinstall the 250 plate.

25. Reinstall the CV joints. Be sure the CV axles lock into place.

26. Reinstall the knuckles.

27. Reinstall the shocks.

28. Reinstall the tires.

